



HDC | HDC HE

TE Internal #: T2040163201-000

Rectangular Contact Inserts, Socket, 16+PE, Spring Terminal, 16 Position, 14 – 20 AWG Wire Size, .5 – 2.5 mm<sup>2</sup> Wire Size, 16 A, Power & Signal, HDC HE

[View on TE.com >](#)

Connectors > Rectangular Connectors > Rectangular Contact Inserts



Contact Type: **Socket**

Contact Insert Pole Configuration: **16+PE**

Termination Method to Wire & Cable: **Spring Terminal**

Number of Positions: **16**

Sealable: **No**

**Features**

**Product Type Features**

Product Type	Contact Insert
Sealable	No

**Configuration Features**

Number of Positions	16
---------------------	----

**Contact Features**

Contact Type	Socket
Contact Insert Pole Configuration	16+PE
Contact Current Rating (Max)	16 A

**Termination Features**

Termination Method to Wire & Cable	Spring Terminal
------------------------------------	-----------------

**Dimensions**

Wire Size	.5 – 2.5 mm <sup>2</sup>
-----------	--------------------------

**Operation/Application**

Circuit Application	Power & Signal
---------------------	----------------

**Product Compliance**

[For compliance documentation, visit the product page on TE.com>](#)

EU RoHS Directive 2011/65/EU

Compliant with Exemptions

EU ELV Directive 2000/53/EC

Compliant with Exemptions

China RoHS 2 Directive MIIT Order No 32, 2016

Restricted Materials Above Threshold

EU REACH Regulation (EC) No. 1907/2006

Current ECHA Candidate List: JUNE 2022 (224)

Candidate List Declared Against: JUNE 2022 (224)

SVHC &gt; Threshold:

Pb (1.9% in Component Part)

**Article Safe Usage Statements:**

Do not eat, drink or smoke when using this product. Wash thoroughly after handling. Recycle if possible and dispose of the article by following all applicable governmental regulations relevant to your geographic location.

Halogen Content

Not Low Halogen - contains Br or Cl &gt; 900 ppm.

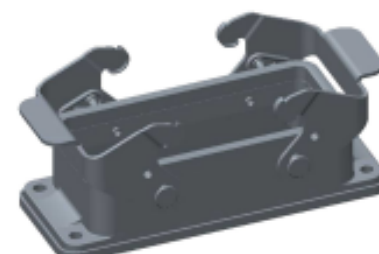
Solder Process Capability

Not reviewed for solder process capability

## Product Compliance Disclaimer

This information is provided based on reasonable inquiry of our suppliers and represents our current actual knowledge based on the information they provided. This information is subject to change. The part numbers that TE has identified as EU RoHS compliant have a maximum concentration of 0.1% by weight in homogenous materials for lead, hexavalent chromium, mercury, PBB, PBDE, DBP, BBP, DEHP, DIBP, and 0.01% for cadmium, or qualify for an exemption to these limits as defined in the Annexes of Directive 2011/65/EU (RoHS2). Finished electrical and electronic equipment products will be CE marked as required by Directive 2011/65/EU. Components may not be CE marked. Additionally, the part numbers that TE has identified as EU ELV compliant have a maximum concentration of 0.1% by weight in homogenous materials for lead, hexavalent chromium, and mercury, and 0.01% for cadmium, or qualify for an exemption to these limits as defined in the Annexes of Directive 2000/53/EC (ELV). Regarding the REACH Regulation, the information TE provides on SVHC in articles for this part number is based on the latest European Chemicals Agency (ECHA) 'Guidance on requirements for substances in articles' posted at this URL: <https://echa.europa.eu/guidance-documents/guidance-on-reach>

## Compatible Parts

TE Part # T1010162100-000  
H16B-KDBPTE Part # T2040163101-000  
HE-016-MSTE Part # T1410162000-000  
H16B-AGTE Part # T1950161225-009  
H16BPR-SGRH-2M25-EMC-CTE Part # T1950162520-000  
H16BPR-SGRH-TM25/TM20TE Part # T1950163220-000  
H16BPR-SGRH-TM32/TM20TE Part # T1952160121-009  
H16BPR-SGRHC-PG21-EMC-CTE Part # T1952160129-009  
H16BPR-SGRHC-PG29-EMC-C



TE Part # T1A40162240-000  
H16BPR-TG/SMA-GR-2M40

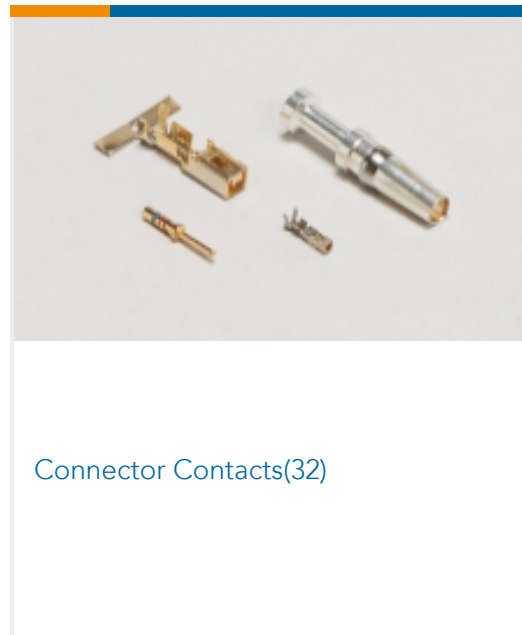


TE Part # T2120160202-000  
ZGG-16DST (1-2/3-4/5-8/6-7)

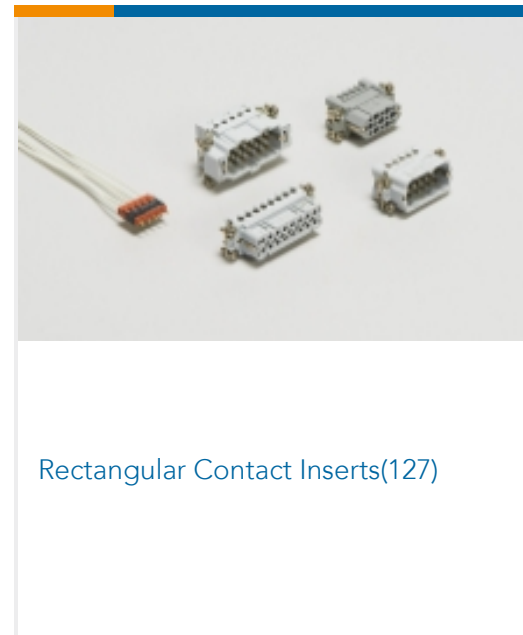


TE Part # T2120160203-000  
ZGGP-16DST (1-9/2-10/3-11/4-12/5-13)

## Also in the Series | HDC HE



Connector Contacts(32)



Rectangular Contact Inserts(127)

## Documents

### Product Drawings

[HE-016-FS](#)

English

### CAD Files

[3D PDF](#)

3D

Customer View Model

[ENG\\_CVM\\_CVM\\_T2040163201-000\\_B.2d\\_dxf.zip](#)

English

Customer View Model

[ENG\\_CVM\\_CVM\\_T2040163201-000\\_B.3d\\_igs.zip](#)

English

Customer View Model

[ENG\\_CVM\\_CVM\\_T2040163201-000\\_B.3d\\_stp.zip](#)

English

By downloading the CAD file I accept and agree to the [Terms and Conditions](#) of use.

### Datasheets & Catalog Pages

[Heavy Duty Connectors](#)

English

[HEAVY DUTY CONNECTORS](#)

English

### Product Specifications



### Application Specification

English

### Application Specification

---

### Product Environmental Compliance

#### TE Material Declaration

English

---

### Agency Approvals

#### Agency Approval Document

English